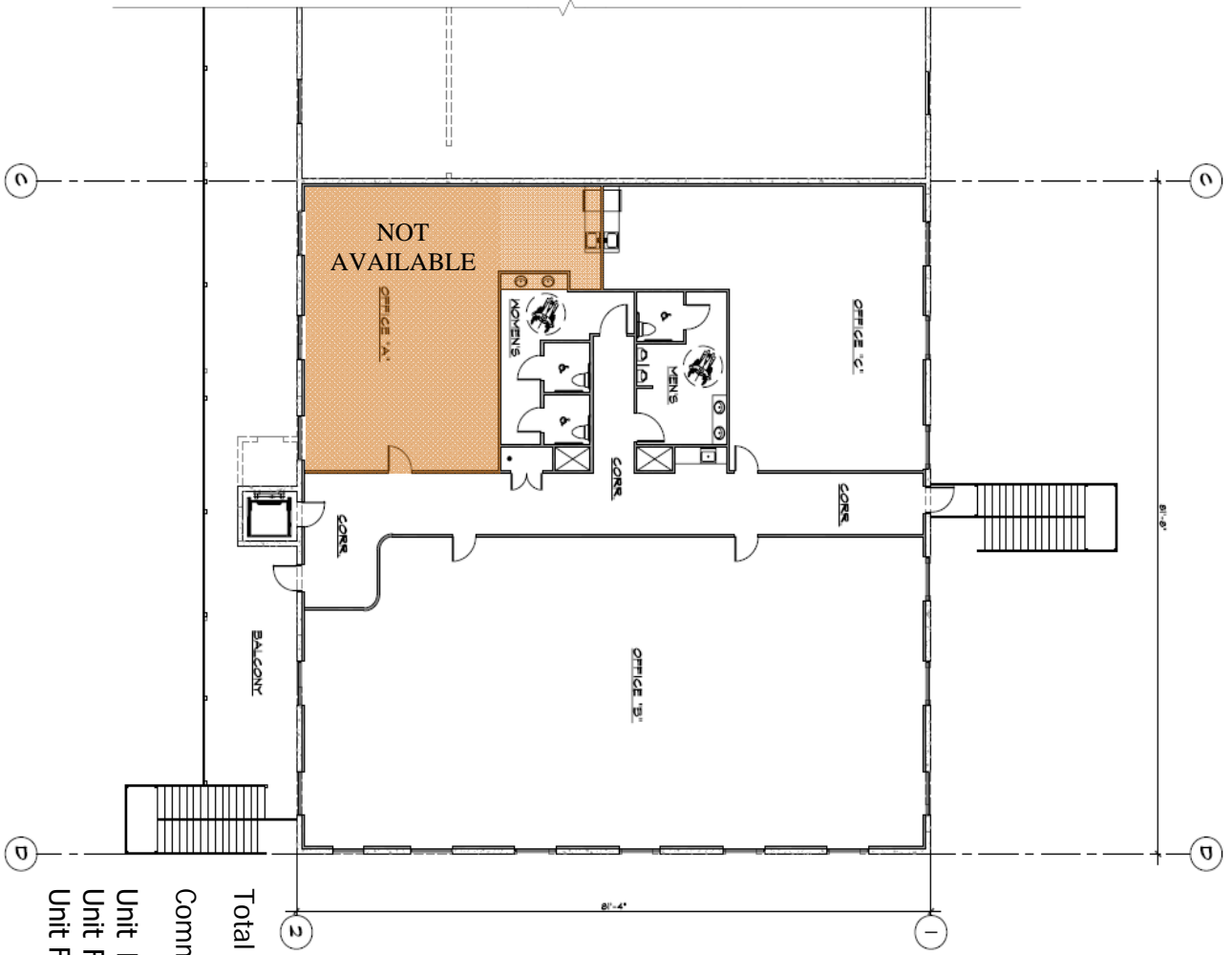


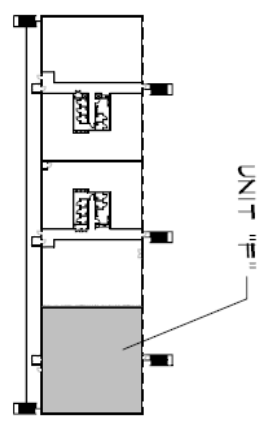
UPPER LEVEL FLOOR PLAN

SCALE 1/8" = 1'-0"



Total Size: 6,462
 Common Area: 1,330
 Unit F-1 Usable sf: 2,928 Rent-able sf: 3,837
 Unit F-2 Usable sf: 966 Rent-able sf: 1,274
 Unit F-3 Owned by Front Range Gun Club

KEY PLAN UPPER FLOOR
 NOT TO SCALE



NOTICE: DUTY OF COOPERATION - Review of these plans constitutes further cooperation under the Owner's Contract, and by Architect, Designer and contractor are complete. Although the Architect and his consultants have performed their services with due care and attention, they cannot guarantee perfection. Construction is subject, and every contractor is held to the contract. Any variation or discrepancy discovered by the contractor shall be reported immediately to the Architect. Failure to notify the Architect constitutes misrepresentation and increases contractor's risk. All work is to be done in accordance with the contract documents. Changes made from the plans without the consent of the Architect are the responsibility of the contractor for all consequences arising out of such changes. THE ARCHITECT'S OFFICE SHALL NOT BE RESPONSIBLE FOR SUCH CHANGES.

© 2017 Kenney & Associates LLC

<p>A3.2</p> <p>Sheet</p>	<p>DATE 08/28/2021</p> <p>DRAWN PSC</p> <p>CHECKED KSC</p> <p>JOB NO. 21-021</p>	<p>UPPER LEVEL FLOOR PLAN</p>	<p>Anasazi Park 697 N. Denver, Suites 200-214</p>	<p>kenney & associates ARCHITECTS LLC</p>	<p>REVISIONS</p> <p>PLANNING DEPT. COMMENTS</p> <p>PLANNING DEPT. COMMENTS</p>	
	<p>Loveland • Colorado</p>		<p>Loveland Colorado</p>	<p>(970) 663-0548</p>		